



**INDUSTRIAL
DEVELOPMENT FORUM**

2022

FOCUS CENTRAL PA

**ATTRACT INVESTMENT THAT
CULTIVATES ECONOMIC
GROWTH IN CENTRAL PA**

**ECONOMIC OPPORTUNITIES ARE CREATED WHEN
CAPITAL INVESTMENT IS PUT TO RISK**

**THIS WORK IS NOT ACCOMPLISHED
BY ONE BUT BY MANY**

**LEADS
SITE VISITS
WINS**

**REGION'S RESOURCE FOR PROMOTING
NEW CORPORATE INVESTMENT**

- MAP LEGEND
- Airports
 - International Airports
 - Colleges & Universities
 - Technical & Trade Schools
 - Penn College PIRC
 - Shell Petrochemical Plant
 - Major Highways
 - Interstate Highways
 - Rail Lines



**INDUSTRIAL
DEVELOPMENT FORUM**

2022

ECOSYSTEM NETWORK



**QUALITY DATA
TRUSTED NETWORK
COLLABORATION
CREATIVE SOLUTIONS
=REDUCED RISKS, INCREASED
SPEED TO ATTRACT
INVESTMENTS THAT...**

**WIN IN THE MARKETPLACE
WIN IN THE WORKPLACE
WIN IN THE COMMUNITIES**





**INDUSTRIAL
DEVELOPMENT FORUM**

2022

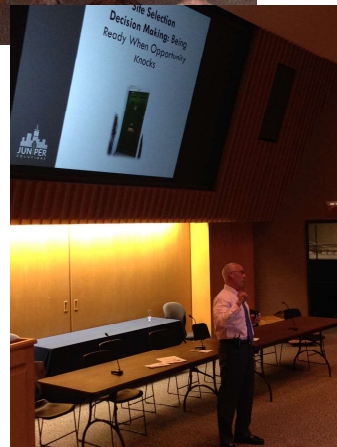


**INDUSTRIAL
DEVELOPMENT FORUM**

2017

June 6th, 2017

**Bucknell
UNIVERSITY**



GAME CHANGERS IN INDUSTRIAL DEVELOPMENT

**INDUSTRIAL ECONOMIC DRIVERS
CORPORATE INVESTMENT PANEL
INDUSTRIAL DEVELOPERS PANEL
INDUSTRIAL INFRASTRUCTURE PANEL
REAL ESTATE MARKET & SITE SELECTION**

- **54 LEADS IN 2017**
- **140 ATTENDEES**

autoneum

SEKISUI | SPI

Kremer Feed
Service Is Our Specialty For Over 60 Years



**INDUSTRIAL
DEVELOPMENT FORUM**

2022



**INDUSTRIAL
DEVELOPMENT FORUM**

2020

June 23RD, 2020

JOIN US ON
JUNE 23RD, 2020
 8:00AM-4:00PM

**INDUSTRIAL
DEVELOPMENT
FORUM**

LEGGINS IN CAMPUS CENTER
 SUSQUEHANNA UNIVERSITY
 UNIVERSITY AVE.
 SELINGROVE, PA 17870

JOIN THE LEADERS IN CENTRAL
 PA ADVANCING GROWTH
 THROUGH PARTNERSHIPS

POSTPONED





**INDUSTRIAL
DEVELOPMENT FORUM**

2022



**INDUSTRIAL
DEVELOPMENT FORUM**

2021

**June 22ND, 2021
LIVE ONLINE**



MYNDSET
EVENTS THAT CONNECT · EVENTS THAT MATTER



**FORWARD THINKING
ECONOMIC GROWTH
INVESTING IN CENTRAL PA
ECOSYSTEM WORK**



EXPERT PANEL:

- INFRASTRUCTURE PARTNERS
- MANUFACTURING LEADERS
- DEVELOPERS
- TALENT LEADERS



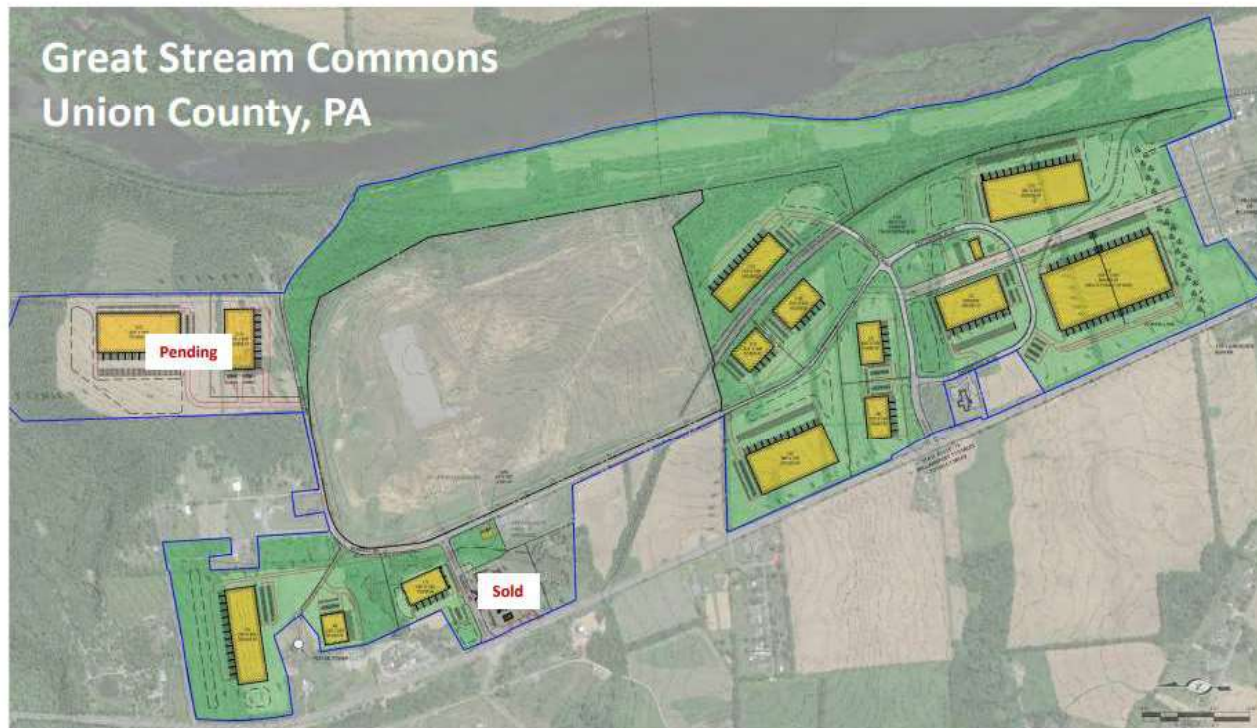
**SHELL PENNSYLVANIA CHEMICAL PROJECT
MANUFACTURING ROUNDTABLES
INDUSTRIAL REAL ESTATE**



- **123 LEADS IN 2021**
- **220 ATTENDEES**



LEE & ASSOCIATES IDF 2021



- Expect increased activity levels, particularly for **Light Manufacturing** requirements
- **Rail and Utility Infrastructure** is likely to play an important role in the growth of the market.
- **Streamlined Entitlements and Statutory Incentives** (KOZ, LERTA designations) will help differentiate the region.
- **Labor** availability is perceived as a challenge. Providing a qualitative look beyond simple demographics is key.