

The Innovation Center



Blown Film Tower (bottom view)

Economic Impact Study: Robert Morris University

Key findings:

- During the 9.5-year construction phases, an annual average of nearly 4,000 jobs was created for a total of 33,550 jobs. This added \$1.5 billion in income to those workers, delivering a total value of \$1.8 billion
- During the operations phase, the study determined that the 600 jobs on site will help leverage a total number of PA jobs exceeding 11,000. The 40-year wage impact from the direct, indirect and induced jobs will be \$22.4 billion and the total value will be \$81.7 billion.



Managing Through COVID-19

2

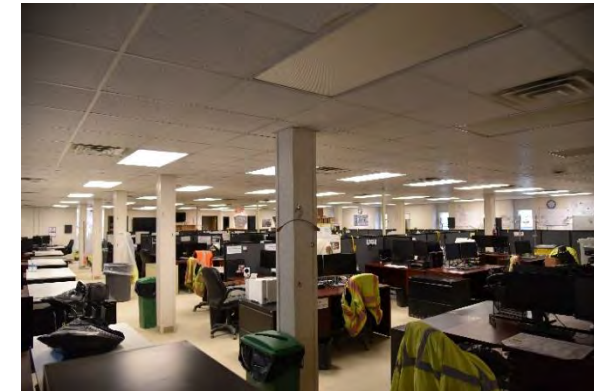
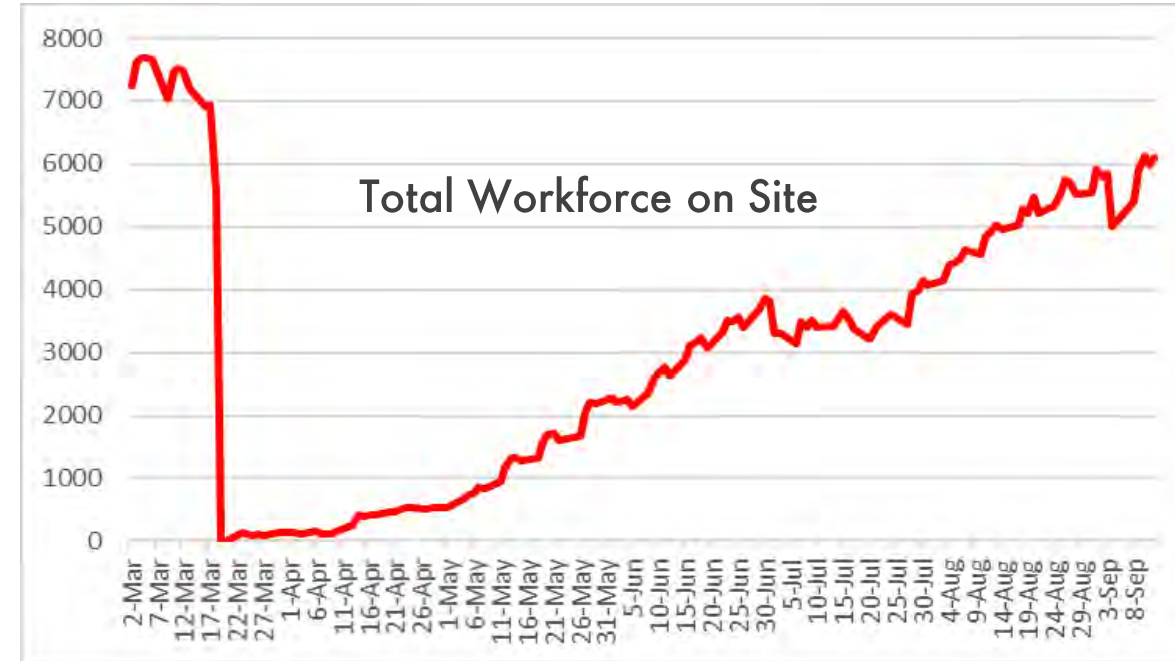
Workforce Impacts of COVID-19

Environment - March 2020

- Outbreak in local nursing home
- Increasing community cases
- Concern of health care providers to meet local needs
- Local officials concerns of large workforce in their community

Situation required action

- On March 18th the leadership decided to pause construction to understand and mitigate the risks of COVID-19
- Initiated a deep cleaning of the site
- Developed an extensive Exposure Control Plan
- Returned workforce in a controlled manner to ensure efficacy of mitigation measures
- Mid-July – added on onsite testing lab from RJ Lee – local company; results in 4-5 hours, which helps keep COVID offsite and helps in managing contact tracing.



Caring for Workers, their Families and the Community

Controls to mitigate the spread of the virus above and beyond State and CDC Guidance

- Medical facilities; staffing, competency, transport, PPE
- Social distancing in personnel facilities; lunch, office, restrooms, smoking
- Transport; 50% occupancy for busses, onsite vehicles
- Social distancing during onsite Construction and Commissioning work
- Onsite testing; diagnostic and screening COVID-19 test (track, trace, isolate)
- Changing well established habits and behaviors'; engagement, high transparency, collaboration



DRIVE THRU SWAB



ONSITE TESTING LAB



ONSITE VACCINATIONS

GOAL: PROTECT THE WORKFORCE, THEIR FAMILIES AND THE LOCAL COMMUNITY WHILST PROGRESSING THE PROJECT AND PRESERVING JOBS

COMMUNITY CARE TEAM





YOU ARE CORDIALLY INVITED TO

SHELL PENNSYLVANIA CHEMICALS PROJECT **VIRTUAL COMMUNITY MEETING**

THURSDAY MAY 6, 2021 | 7-8PM

Members of the project's leadership team will share updates on our path to completion and eventual startup of operations.

A link to the meeting will be emailed to you after you RSVP using the following link:

**[http://go.shell.com/
ShellPolymersCommunityMeeting](http://go.shell.com/ShellPolymersCommunityMeeting)**

If you prefer to register or join by phone, rather than internet, please call us at:

1-844-776-5581

Meeting Sustainability Challenges

3

SHELL CHEMICALS AND SUSTAINABILITY

Our sustainability agenda is focused on two broad goals, to reduce plastic waste and to reduce the carbon footprint of our petrochemical products.

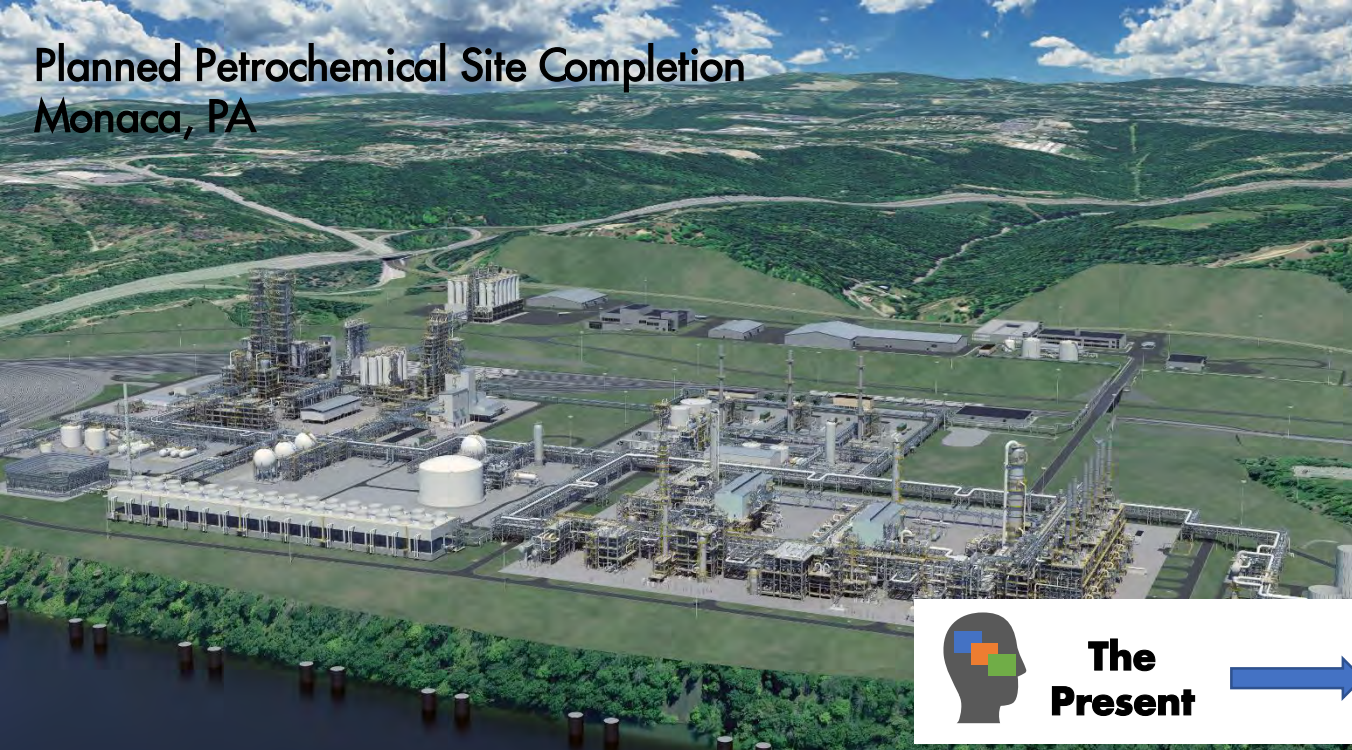
PLASTICS WASTE

- We are finding new ways to recycle plastic waste into innovative products.
- In 2019, we announced our ambition to use **one million tonnes** of plastic waste as feedstock at our chemical plants by 2025. This is an important step towards building a circular economy by using plastic waste to produce chemicals, which can be used to make plastics again.
- The first plant to do this was **Norco in Louisiana, USA**. Our intention is to scale up the technology and deploy it at our chemical plants in North America, Europe and Asia, gradually achieving world-scale production by 2025.
- We are a founding member of the **Alliance to End Plastic Waste**, which plans to invest about \$1.5 billion over the next five years to help end plastic pollution in the environment.

CARBON REDUCTION



Planned Petrochemical Site Completion
Monaca, PA



Drone Technology



