

**Mount Nittany Health  
State College, Pennsylvania  
\$90M new 125kSF outpatient center  
Opening Spring 2024.**



**Located on 20 acres of a 700-acre multi-use  
Toftrees West development.**

**Pennsylvania**  
WORK SMART. LIVE HAPPY.





**Penn Highlands Healthcare  
State College, Pennsylvania  
\$70M new 80kSF state of the art hospital and  
32kSF medical office building.  
Opening summer of 2024.**

**Pennsylvania**  
WORK SMART. LIVE HAPPY.



**Mount Nittany Health  
State College, Pennsylvania  
\$350M new 300kSF patient tower  
Opening 2026.**



**Pennsylvania**  
WORK SMART. LIVE HAPPY.

**Geisinger Bellefonte  
Primary Care Clinic  
\$4M investment  
20,000 sq ft  
2024 Completion.**

Geisinger



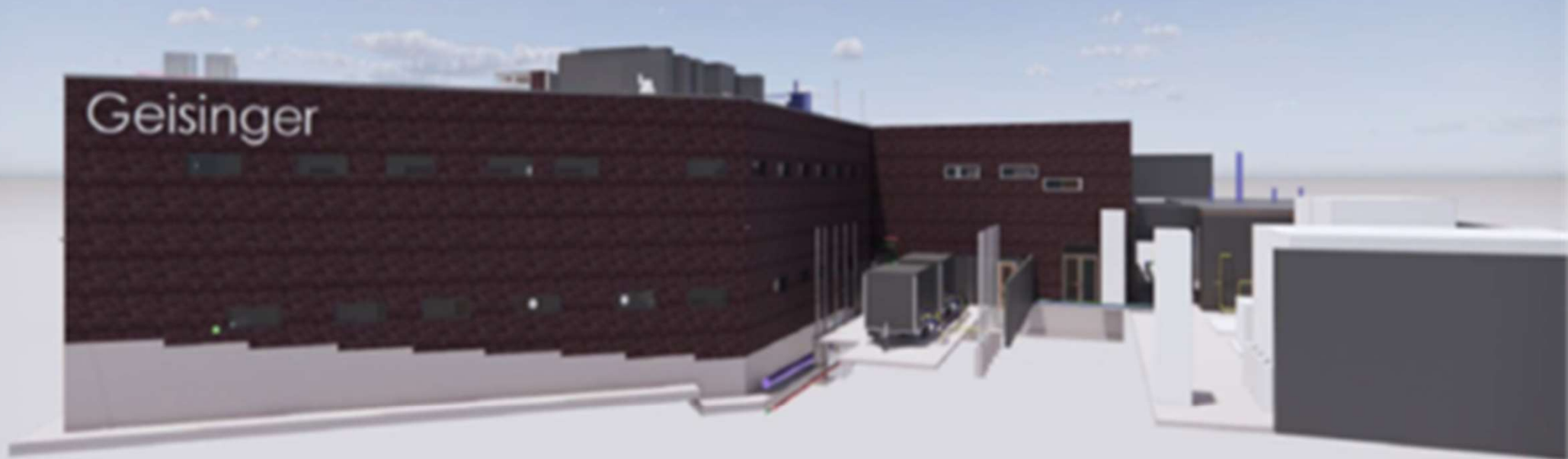
**Pennsylvania**  
WORK SMART. LIVE HAPPY.

## **Geisinger Healthplex State College – Gray's Woods**

**Phase III – (Now) 21,000 sq ft - \$3M Investment**

**Phase IV – (2027) 70,000 sq ft**

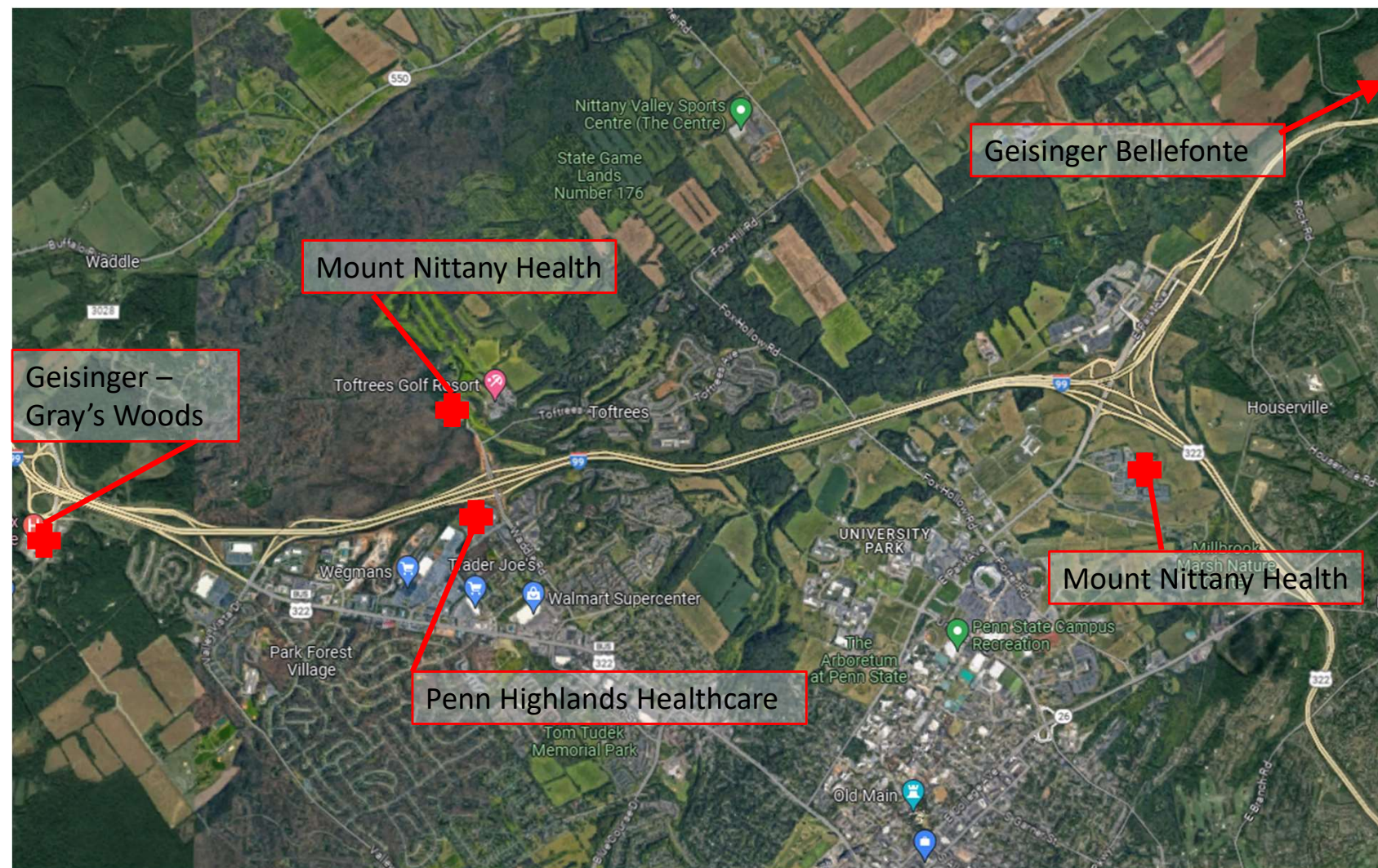
**Phase V, IV – (2037) 36,000 sq ft**



**Geisinger**

**Pennsylvania**  
WORK SMART. LIVE HAPPY.





TOTAL INVESTMENT  
**\$600M+**

TOTAL SQFT  
**600K+**  
**Sqft**