

**Mount Nittany Health  
State College, Pennsylvania  
\$90M new 125kSF outpatient center  
Opening Spring 2024.**



**Located on 20 acres of a 700-acre multi-use  
Toftrees West development.**



**Penn Highlands Healthcare  
State College, Pennsylvania  
\$70M new 80kSF state of the art hospital and  
32kSF medical office building.  
Opening summer of 2024.**

**Mount Nittany Health  
State College, Pennsylvania  
\$350M new 300kSF patient tower  
Opening 2026.**



**Geisinger Bellefonte  
Primary Care Clinic  
\$4M investment  
20,000 sq ft  
2024 Completion.**

Geisinger

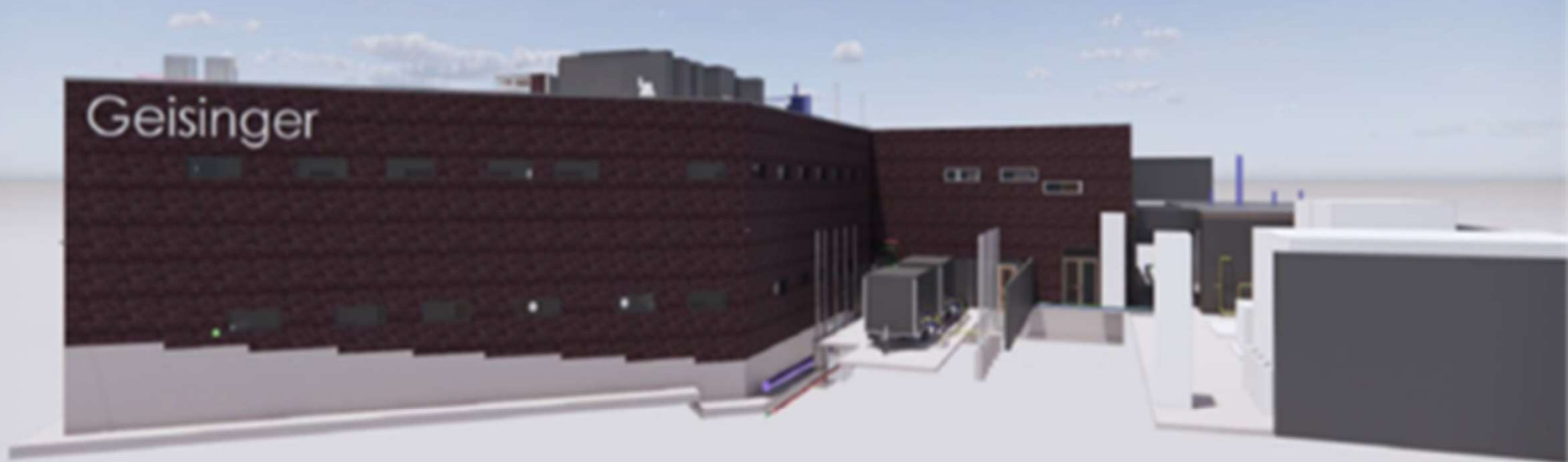


**Geisinger Healthplex State College – Gray's Woods**

**Phase III – (Now) 21,000 sq ft - \$3M Investment**

**Phase IV – (2027) 70,000 sq ft**

**Phase V, IV – (2037) 36,000 sq ft**



Geisinger

**Centre Volunteers In Medicine – Bellefonte, PA  
Provide Medical Service to Uninsured in Centre County**

**Purchased building for \$2.35M**

**Raised \$10.2M in capital campaign for renovations**

**Received \$3M Redevelopment Assistance Capital Project funds (RACP)**

**Opened in May of 2023**

